

XYLO
flooring

XYLO

flooring

Xylo Flooring is built on a commitment to craftsmanship, innovation, and enduring quality. For over 25 years we have curated a comprehensive portfolio of hardwood, laminate, and vinyl flooring solutions designed to inspire, perform, and stand the test of time. From premium engineered wood collections to high-specification SPC and laminate ranges, every Xylo product is created with meticulous attention to detail, offering designers, homeowners, and developers a versatile palette of textures, colours, and formats that elevate any interior. Here you'll discover the breadth of the Xylo collections and the quality standards that set them apart.

Welcome to the world of Xylo Flooring.

At Xylo Flooring, we pride ourselves on offering one of the most comprehensive and fashion-forward collections of hardwood, laminate, and vinyl flooring available today. Whether for office buildings, show homes, hotels, or designer residences, our wide variety of shades, widths, and finishes ensures a stunning result in every setting.

Crafted from meticulously selected raw materials and manufactured to the highest technical and environmental standards, Xylo floors are designed for exceptional longevity, rich colour, and enduring beauty.

As a market leader in the flooring industry Xylo Flooring delivers uncompromising quality across a portfolio of more than 100 products, including premium quality engineered wood flooring, SPC Click vinyl collections, which are available across three designs: Greenwich Plank, Westminster Herringbone, and Fitzrovia Chevron.

We also offer LVT Dry-Back vinyl, Pimlico Plank and Holland Park Herringbone, plus our Battersea water-resistant laminate collection.

Xylo Flooring specialises in premium engineered wood flooring ranges including Richmond, Fulham, Victoria, Islington, St James Herringbone, and Soho Chevron. These collections, available in 14–20mm thicknesses, feature highly stable multi-layer constructions. Xylo Flooring is built on a commitment to craftsmanship, innovation, and enduring quality. For over 25 years we have curated a comprehensive portfolio of hardwood, laminate, and vinyl flooring solutions designed to inspire, perform, and stand the test of time.

Every Xylo product is created with meticulous attention to detail, offering designers, homeowners, and developers a versatile palette of textures, colours, and formats that elevate any interior.



Here you'll discover the breadth of the Xylo collections and the quality standards that set them apart. Offered in T&G, glueless floating click systems, and direct-stick options. Our click installations incorporate market-leading technologies such as UNICLIC® and VALINGE®.

Our 20mm structural multi-layer boards may also be installed directly onto joists, with no subfloor required.

Xylo products feature in a wide variety of developments across the UK, from large-scale commercial sites to boutique residential projects. Our collections provide a fresh, inspiring, and innovative combination of colours and textures that are both versatile and exceptionally durable, suitable for domestic and commercial applications alike.

Our reputation is built on reliability, quality, and trust, with a commitment to delivering innovative flooring solutions and unmatched customer support. A

full presentation of our products can be viewed at our showroom in the Business Design Centre, Islington, London.

With over 150,000m² of flooring held in our UK warehouses at any given time, we operate a nationwide distribution network as well as a global export service - ensuring Xylo Flooring can support projects wherever they are located.





ENGINEERED WOOD COLLECTION

Fulham Click 14mm	6
Richmond T&G Random Lengths 14mm	10
Richmond Plank T&G 14mm	12
Victoria T&G 20mm	14
Soho Chevron T&G 14m	16
St James Herringbone T&G 14mm	17
Islington T&G 14-18mm	18

SPC VINYL 6MM COLLECTION

Westminster SPC Herringbone Click	20
Fitzrovia SPC Chevron Click	22
Greenwich SPC Plank Click	24

LAMINATE 10MM COLLECTION

Battersea Plank Click	26
-----------------------	----

LVT DRYBACK VINYL 3MM COLLECTION

Holland Park Herringbone LVT DryBack	28
Pimlico Plank LVT DryBack	30

THE FLOORING ESSENTIALS

Matching Wood & Laminate Profiles	32
Underlay for Wood, Laminate & Vinyl Flooring	34
Care & Maintenance	36
Flooring Selection Considerations	38
Installing Xylo Flooring Over Underfloor Heating	40
Glossary	42

Fulham Engineered Click Collection

The Fulham range offers a variety of classic products using natural oak. Within this multi-layer collection, and whether your choice of wood is UV oiled or UV lacquered, 150mm or 190mm width planks, all will produce a luxurious floor for the room of your choice. The Fulham collection can also be installed over underfloor heating systems and once laid your flooring will be easy to care for and maintain.



R78

OAK, RUSTIC-ABCD, UV OILED

14 X 190 X 1900MM

TYPE: UNICLIC

RRP: £65.95 PER M²

WEAR LAYER: 3MM

4 BEVEL



R79

OAK, RUSTIC-ABCD, UV LACQUERED

14 X 190 X 1900MM

TYPE: UNICLIC

RRP: £65.95 PER M²

WEAR LAYER: 3MM

4 BEVEL



R80

OAK, RUSTIC-ABCD, UV OILED

14 X 150 X 1900MM

TYPE: UNICLIC

RRP: £63.95 PER M²

WEAR LAYER: 3MM

4 BEVEL



R81

OAK, RUSTIC-ABCD, UV LACQUERED

14 X 150 X 1900MM

TYPE: UNICLIC

RRP: £63.95 PER M²

WEAR LAYER: 3MM

4 BEVEL



R88

DARK WALNUT STAINED OAK, RUSTIC-ABCD, BRUSHED, UV OILED

14 X 190 X 1900MM

TYPE: UNICLIC

RRP: £76.95 PER M²

WEAR LAYER: 3MM

4 BEVEL



R106
 SILVER GREY WASHED OAK, RUSTIC-ABCD, BRUSHED, UV LACQUERED
 14 X 190 X 1900MM WEAR LAYER: 3MM
 TYPE: UNICLIC 4 BEVEL
 RRP: £78.95 PER M²



R109
 MINK SILVER GREY STAINED OAK, RUSTIC-ABCD, BRUSHED, UV OILED
 14 X 190 X 1900MM WEAR LAYER: 3MM
 TYPE: UNICLIC 4 BEVEL
 RRP: £74.95 PER M²



R110
 POLAR WHITE STAINED OAK, RUSTIC-ABCD, BRUSHED, UV OILED
 14 X 190 X 1900MM WEAR LAYER: 3MM
 TYPE: UNICLIC 4 BEVEL
 RRP: £76.95 PER M²



R114
 SMOOTH GREY STAINED OAK, RUSTIC-ABCD, UV MATT LACQUERED
 14 X 190 X 1900MM WEAR LAYER: 3MM
 TYPE: UNICLIC 4 BEVEL
 RRP: £76.95 PER M²



R117
 OAK, RUSTIC-ABCD, BRUSHED, UV OILED
 14 X 190 X 1900MM WEAR LAYER: 3MM
 TYPE: UNICLIC 4 BEVEL
 RRP: £74.95 PER M²



R118
 EARTH NATURAL STAINED OAK, RUSTIC-ABCD, BRUSHED, UV OILED
 14 X 190 X 1900MM WEAR LAYER: 3MM
 TYPE: UNICLIC 4 BEVEL
 RRP: £76.95 PER M²



R230



R119

WHITE STAINED OAK, RUSTIC-ABCD, SMOKED, BRUSHED, UV OILED
 14 X 190 X 1900MM WEAR LAYER: 3MM
 TYPE: UNICLIC 4 BEVEL
 RRP: £74.95 PER M²



R120

OAK, AB, UV LACQUERED
 14 X 190 X 1900MM WEAR LAYER: 3MM
 TYPE: UNICLIC 4 BEVEL
 RRP: £94.95 PER M²



R121

OAK, AB, UV OILED
 14 X 190 X 1900MM WEAR LAYER: 3MM
 TYPE: UNICLIC 4 BEVEL
 RRP: £94.95 PER M²



R130

PEARL WHITE STAINED OAK, RUSTIC-ABCD, BRUSHED, UV OILED
 14 X 190 X 1900MM WEAR LAYER: 3MM
 TYPE: UNICLIC 4 BEVEL
 RRP: £76.95 PER M²



R140

HAVANA GREY STAINED OAK, RUSTIC-ABCD, BRUSHED, UV OILED
14 X 190 X 1900MM WEAR LAYER: 3MM
TYPE: UNICLIC 4 BEVEL
RRP: £74.95 PER M²



R180

STAINED SMOKED OAK, RUSTIC-ABCD, UV LACQUERED
14 X 190 X 1900MM WEAR LAYER: 3MM
TYPE: UNICLIC 4 BEVEL
RRP: £74.95 PER M²



R200

MUSHROOM GREY STAINED OAK, RUSTIC-ABCD, BRUSHED, UV LACQUERED
14 X 190 X 1900MM WEAR LAYER: 3MM
TYPE: UNICLIC 4 BEVEL
RRP: £74.95 PER M²



R225

COFFEE STAINED OAK, RUSTIC-ABCD, BRUSHED, UV LACQUERED
14 X 190 X 1900MM WEAR LAYER: 3MM
TYPE: UNICLIC 4 BEVEL
RRP: £74.95 PER M²



R229

GREY STAINED OAK, RUSTIC-ABCD, BRUSHED, UV OILED
14 X 190 X 1900MM WEAR LAYER: 3MM
TYPE: UNICLIC 4 BEVEL
RRP: £76.95 PER M²



R230

OAK, RUSTIC-ABCD, BRUSHED, SMOKED UV OILED
14 X 190 X 1900MM WEAR LAYER: 3MM
TYPE: UNICLIC 4 BEVEL
RRP: £74.95 PER M²

Richmond Engineered Random Lengths T&G Collection

The Richmond random length range offers planks of varying lengths in a classic selection of colours using a natural oak multi-layer construction. Available in both UV oiled and UV lacquered finishes, using a slimline 150mm wide plank you can create the room of your choice. This collection can be laid over underfloor heating systems, once laid this range of flooring will be easy to care for and maintain.



R54

OAK RUSTIC, ABCD, UV OILED

14 X 150 X 400-1500MM

TYPE: T&G

RRP: £56.95 PER M²

WEAR LAYER: 3MM

4 BEVEL



R63

OAK, RUSTIC-ABCD, UV LACQUERED

14 X 150 X 400-1500MM

TYPE: T&G

RRP: £56.95 PER M²

WEAR LAYER: 3MM

4 BEVEL



R228A

BLACK STAINED OAK HANDSCRAPED, RUSTIC-ABCD, BRUSHED, UV LACQUERED

14 X 150 X 400-1500MM

TYPE: T&G

RRP: £76.95 PER M²

WEAR LAYER: 3MM

4 BEVEL



R231

OAK RUSTIC, ABCD, BRUSHED SMOKED, UV OILED

14 X 150 X 400-1500MM

TYPE: T&G

RRP: £65.95 PER M²

WEAR LAYER: 3MM

4 BEVEL



R232

SILVER GREY WASHED OAK, ABCD, BRUSHED, RUSTIC UV LACQUERED

14 X 150 X 400-1500MM

TYPE: T&G

RRP: £65.95 PER M²

WEAR LAYER: 3MM

4 BEVEL



R233

MUSHROOM GREY STAINED OAK, BRUSHED, ABCD, RUSTIC UV LACQUERED
14 X 150 X 400-1500MM WEAR LAYER: 3MM
TYPE: T&G 4 BEVEL
RRP: £65.95 PER M²



R234

PEARL WHITE STAINED OAK, RUSTIC-ABCD, BRUSHED, UV OILED
14 X 150 X 400-1500MM WEAR LAYER: 3MM
TYPE: T&G 4 BEVEL
RRP: £65.95 PER M²



RICHMOND RANDOM LENGTHS - R63

Richmond Plank T&G Collection

The Richmond range offers a variety of classic products using natural oak in a multi-layer collection. Finishes; in both UV oiled and UV lacquered, a choice of plank widths—a slimline 150mm or a generous 190mm width to compliment your interior. This collection can be laid over underfloor heating systems. Once laid this range of flooring will be easy cared for.



R23



R22



R23

OAK, RUSTIC-ABCD, UV OILED
14 X 190 X 1900MM
TYPE: T&G
RRP: £63.95 PER M²

WEAR LAYER: 3MM
4 BEVEL

OAK, RUSTIC-ABCD, UV LACQUERED
14 X 190 X 1900MM
TYPE: T&G
RRP: £63.95 PER M²

WEAR LAYER: 3MM
4 BEVEL



R24

OAK, RUSTIC-ABCD, UV LACQUERED

14 X 150 X 1900MM

TYPE: T&G

RRP: £61.95 PER M²

WEAR LAYER: 3MM

4 BEVEL



R65

OAK, RUSTIC-ABCD, UV OILED

14 X 150 X 1900MM

TYPE: T&G

RRP: £61.95 PER M²

WEAR LAYER: 3MM

4 BEVEL



R66

WHITE STAINED OAK, RUSTIC-CD, BRUSHED AND SMOKED UV OILED

14 X 190 X 1900MM

TYPE: T&G

RRP: £72.95 PER M²

WEAR LAYER: 3MM

4 BEVEL



R67

OAK, COUNTRY GRADE-DE, SMOKED, BRUSHED, UV OILED

14 X 190 X 1900MM

TYPE: T&G

RRP: £72.95 PER M²

WEAR LAYER: 3MM

4 BEVEL



R74

LIMED WHITE STAINED OAK, RUSTIC-ABCD, BRUSHED UV OILED

14 X 190 X 1900MM

TYPE: T&G

RRP: £72.95 PER M²

WEAR LAYER: 3MM

4 BEVEL



R75

POLAR WHITE STAINED OAK, RUSTIC-ABCD, BRUSHED, UV OILED

14 X 190 X 1900MM

TYPE: T&G

RRP: £72.95 PER M²

WEAR LAYER: 3MM

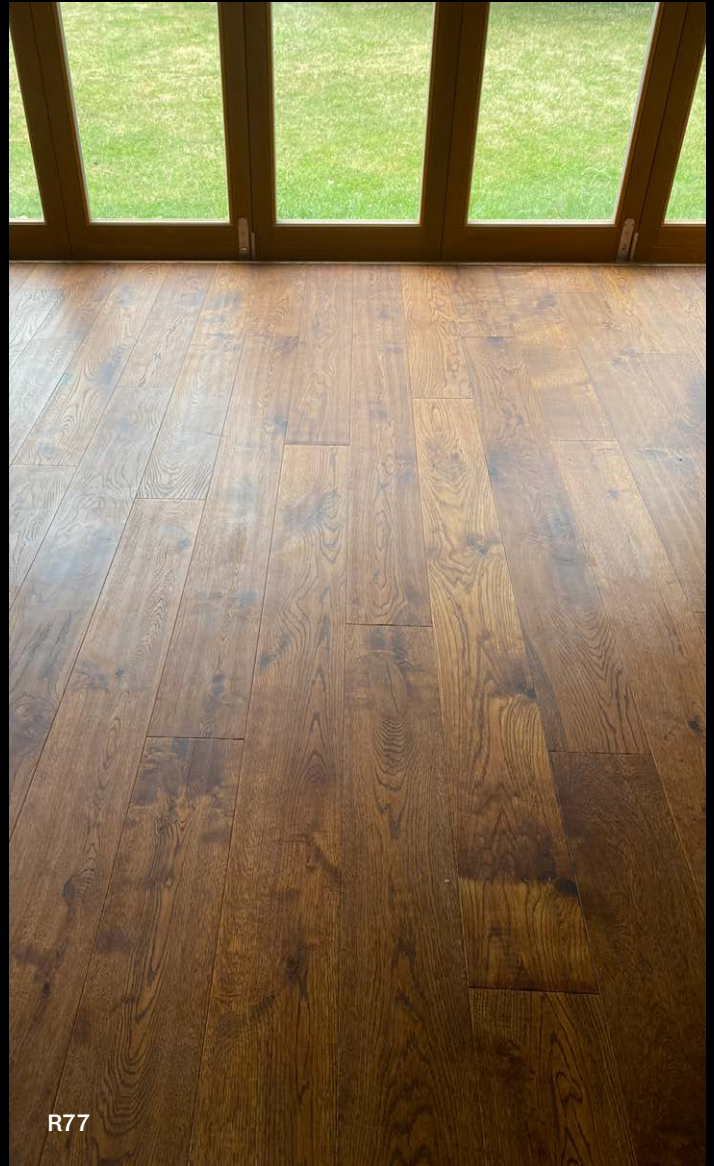
4 BEVEL

Victoria Engineered T&G Collection

This unique 20mm multi-layer rustic floor celebrates the natural characteristics of European oak. This product can be used as a structural board allowing it to be laid across floor joists. It can also be laid as a floating floor or directly adhered to the substrate. It can also be used over underfloor heating. An easy option for care and maintenance.



R69
OAK, RUSTIC-CD, SMOKED, BRUSHED, UV OILED
20 X 190 X 1900MM WEAR LAYER: 4MM
TYPE: T&G 4 BEVEL
RRP: £87.95 PER M²



R77



R71
OAK, RUSTIC-CD, BRUSHED, UV OILED
20 X 190 X 1900MM WEAR LAYER: 4MM
TYPE: T&G 4 BEVEL
RRP: £83.95 PER M²



R72

OAK, RUSTIC-CD, SMOKED, BRUSHED, HANDSCRAPED, UV OILED
20 X 190 X 1900MM WEAR LAYER: 4MM
TYPE: T&G 4 BEVEL
RRP: £89.95 PER M²



R77
DARK WALNUT STAINED OAK, RUSTIC-CD, BRUSHED, HANDSCRAPED, UV OILED
20 X 190 X 1900MM WEAR LAYER: 4MM
TYPE: T&G 4 BEVEL
RRP: £91.95 PER M²



R95
POLAR WHITE STAINED OAK, RUSTIC-CD, BRUSHED, UV OILED
20 X 190 X 1900MM WEAR LAYER: 4MM
TYPE: T&G 4 BEVEL
RRP: £85.95 PER M²



R100
OAK, RUSTIC-CD, BRUSHED, HANDSCRAPED UV OILED
20 X 190 X 1900MM WEAR LAYER: 4MM
TYPE: T&G 4 BEVEL
RRP: £89.95 PER M²



R102
OAK RUSTIC-ABCD LAQUERED
20 X 190 X 1900MM WEAR LAYER: 4MM
TYPE: T&G 4 BEVEL
RRP: £87.95 PER M²



R105
SMOOTH GREY STAINED OAK, RUSTIC-CD, UV MATT LACQUERED
20 X 190 X 1900MM WEAR LAYER: 4MM
TYPE: T&G 4 BEVEL
RRP: £59.95 PER M²



R113
SILVER GREY STAINED OAK, RUSTIC-CD, BRUSHED, UV OILED
20 X 190 X 1900MM WEAR LAYER: 4MM
TYPE: T&G 4 BEVEL
RRP: £83.95 PER M²

Soho Chevron Engineered T&G Collection

This stunning range of oak flooring entwines a traditional feature of Chevron with a contemporary size board, the micro bevel on each plank defines the pattern you create. The earthy shades in Soho will enhance any room in your house or business, and the oiled finish makes this an easy floor to maintain.



R122
WHITE WASH COFFEE STAINED OAK, RUSTIC-ABCD, BRUSHED, UV OILED
14 X 90 X 540MM WEAR LAYER: 3MM
TYPE: T&G 4 BEVEL
RRP: £85.95 PER M²



R123
DARK MOCHA STAINED OAK, RUSTIC-ABCD, BRUSHED, UV OILED
14 X 90 X 540MM WEAR LAYER: 3MM
TYPE: T&G 4 BEVEL
RRP: £85.95 PER M²



R135
NATURAL OAK, RUSTIC-ABCD, BRUSHED, UV OILED
14 X 90 X 540MM WEAR LAYER: 3MM
TYPE: T&G 4 BEVEL
RRP: £85.95 PER M²



R136
PEARL WHITE STAINED OAK, RUSTIC-ABCD, BRUSHED, UV OILED
14 X 90 X 540MM WEAR LAYER: 3MM
TYPE: T&G 4 BEVEL
RRP: £85.95 PER M²

St James Engineered Herringbone T&G Collection

This stunning range of oak flooring honours the traditional feature of Herringbone with a contemporary size board, the micro bevel on each plank defines the pattern you create. The homely shades in St James will enhance any room in your house or business and provide an easy floor to maintain.



R131

MUSHROOM GREY STAINED OAK, RUSTIC-ABCD, BRUSHED UV LACQUERED
14 X 125 X 625MM WEAR LAYER: 3MM
TYPE: T&G 4 BEVEL
RRP: £83.95 PER M²



R132

WHITE WASH COFFEE STAINED OAK, RUSTIC-ABCD, BRUSHED, UV OILED
14 X 125 X 625MM WEAR LAYER: 3MM
TYPE: T&G 4 BEVEL
RRP: £83.95 PER M²



R133

SILVER GREY WASHED STAINED OAK, RUSTIC-ABCD, BRUSHED, UV LACQUERED
14 X 125 X 625MM WEAR LAYER: 3MM
TYPE: T&G 4 BEVEL
RRP: £83.95 PER M²



R134

NATURAL OAK, RUSTIC-ABCD, BRUSHED, UV OILED
14 X 125 X 625MM WEAR LAYER: 3MM
TYPE: T&G 4 BEVEL
RRP: £83.95 PER M²



R137

OAK, RUSTIC-ABCD, SMOKED, BRUSHED, UV OILED
14 X 125 X 625MM WEAR LAYER: 3MM
TYPE: T&G 4 BEVEL
RRP: £83.95 PER M²

Islington Engineered T&G Collection

With glamorous and generous extra wide planks from 240mm to 300mm our Islington boards will change the impression of any room to dramatic effect, making a smaller room appear it has more volume and giving a grand sweep to any larger area. The soft oak finishes will equally compliment both traditional and contemporary settings alike. This product is ideal for laying over underfloor heating and easy to maintain once laid.



R82
POLAR WHITE STAINED OAK, RUSTIC-ABCD, BRUSHED, UV OILED
14 X 240 X 1900MM WEAR LAYER: 3MM
TYPE: T&G 4 BEVEL
RRP: £79.95 PER M²



R83
OAK, RUSTIC-ABCDE, BRUSHED, UV OILED
14 X 240 X 1900MM WEAR LAYER: 3MM
TYPE: T&G 4 BEVEL
RRP: £76.95 PER M²



R84
LIMED WASHED OAK, RUSTIC-ABCDE, BRUSHED, UV OILED
18 X 300 X 2200MM WEAR LAYER: 4MM
TYPE: T&G 4 BEVEL
RRP: £96.95 PER M²





Westminster

SPC HERRINGBONE VINYL COLLECTION



Westminster SPC Vinyl Herringbone features the trusted Valinge 5G click system for fast installation and a durable, hygienic surface that's easy to clean. Suitable for all areas of the home with a lifetime residential warranty and a 15-year medium commercial warranty.

PRICE: £45.95 PER M2
 PLANK DIMENSIONS: 6 X 110 X 620MM
 INSTALLATION: 5G
 BEVEL: 4
 UNDERLAY 1MM INCLUDED



OCEAN DUNES HSPCHB2001



TUCKERS POINT HSPCHB2002



ROYAL CANBERRA HSPCHB2003



OCEAN RIDGE HSPCHB2004



SEA PINES HSPCHB2005



FINCA HSPCHB2006



ROOKERY HSPCHB2007



HERITAGE HSPCHB2008



GRAYHAWK HSPCHB2009



SILVER ROCK HSPCHB2010



ESCENA LIGHT WALNUT HSPCHB5006



EMERALD BAY HSPCHB5007



Fitzrovia

SPC CHEVRON VINYL COLLECTION



Fitzrovia SPC Vinyl Chevron features the trusted Valinge 5Gi click system for fast installation and a durable, hygienic surface that's easy to clean. Suitable for all areas of the home with a lifetime residential warranty and a 15-year medium commercial warranty.

PRICE: £45.95 PER M²
 PLANK DIMENSIONS: 6 X 127 X 600MM
 INSTALLATION: 5Gi
 UNDERLAY 1MM INCLUDED



OCEAN DUNES FSPCCHEV2001



TUCKERS POINT FSPCCHEV2002



ROYAL CANBERRA FSPCCHEV2003



OCEAN RIDGE FSPCCHEV2004



SEA PINES FSPCCHEV2005



FINCA FSPCCHEV2006



ROOKERY FSPCCHEV2007



HERITAGE FSPCCHEV2008



GRAYHAWK FSPCCHEV2009



SILVER ROCK FSPCCHEV2010



ESCENA LIGHT WALNUT FSPCCHEV5006



EMERALD BAY FSPCCHEV5007



Greenwich

SPC PLANK COLLECTION



Greenwich SPC Vinyl Plank features the trusted Valinge 5G click system for fast installation and a durable, hygienic surface that's easy to clean. Suitable for all areas of the home with a lifetime residential warranty and a 15-year medium commercial warranty.

PRICE: £39.95 PER M²
 PLANK DIMENSIONS: 6 X 180 X 1200MM
 INSTALLATION: 5G
 UNDERLAY 1MM INCLUDED



OCEAN DUNES GSPCPLANK2001



TUCKERS POINT GSPCPLANK2002



ROYAL CANBERRA GSPCPLANK2003



OCEAN RIDGE GSPCPLANK2004



SEA PINES GSPCPLANK2005



FINCA GSPCPLANK2006



ROOKERY GSPCPLANK2007



HERITAGE GSPCPLANK2008



GRAYHAWK GSPCPLANK2009



SILVER ROCK GSPCPLANK2010



ESCENA LIGHT WALNUT GSPCPLANK5006



EMERALD BAY GSPCPLANK5007



Battersea

LAMINATE PLANK COLLECTION



Battersea Water-Resistant Laminate features the trusted Valinge 5G click system for fast installation and a durable, hygienic surface that's easy to clean. Suitable for all areas of the home with a 25-year residential warranty and a 10-year medium commercial warranty.

PRICE: £31.95 PER M²
 PLANK DIMENSIONS: 10 X 196 X 1200MM
 INSTALLATION: 5G



SOUTH CREEK OAK IM6007-1LAML0SW



RENAISSANCE OAK IM6008-1LAML0SW



PENINSULA DARK OAK IM6013-1LAML0SW



PINE HILLS OAK IM6021-4LAML0SW



COPPERHEAD OAK IM6024-3LAML0SW



OYSTER REEF OAK IM6026-4LAML0SW



BOULDERS OAK IM6033-3LAML0SW



WEST PALM OAK IM6037-2LAML0SW



OCEAN FRONT OAK IM6063-9LAML0SW



BAY HILL LIGHT GREY IM6071-1LAML0SW



MOON SPA IM6072-5LAML0SW



TURTLE POINT IMYC5700LAML0SW



Holland Park

LVT DRYBACK VINYL HERRINGBONE COLLECTION



Holland Park Glue-Down LVT Vinyl Flooring offers a durable, hygienic surface that's easy to clean and suitable for all areas of the home or workplace. Covered by a lifetime residential warranty, 15-year medium commercial warranty, and 5-year heavy commercial warranty. **This product also carries a slip rating R11 / PTV37+**

PRICE: £37.95 PER M²
 PLANK DIMENSIONS: 3 X 122 X 610MM
 INSTALLATION: GLUE



FINCA K200112EL - 06



OCEAN DUNES K200112EL - 09



SILVER ROCK K200128EL - 07



HERITAGE K200403EL - 13



SEA PINES K200410EL - 10



OCEAN RIDGE K200411EL - 13



ROYAL CANBERRA K200415EL - 10



TUCKERS POINT K200432EL - 04



ROCKERY K200432EL - 09



GRAYHAWK K200432EL - 11



ESCENA LIGHT WALNUT K5119 - 6



EMERALD BAY K5145 - 6



Pimlico

LVT DRYBACK VINYL PLANK COLLECTION



Pimlico Glue-Down LVT Vinyl Flooring offers a durable, hygienic surface that's easy to clean and suitable for all areas of the home or workplace. Covered by a lifetime residential warranty, 15-year medium commercial warranty, and 5-year heavy commercial warranty. **This product also carries a slip rating R11 / PTV37+**

PRICE: £35.95 PER M²
 PLANK DIMENSIONS: 3 X 180 X 1200MM
 INSTALLATION: GLUE



FINCA J200112EL - 06



OCEAN DUNES J200112EL - 09



SILVER ROCK J200128EL - 07



HERITAGE J200403EL - 13



SEA PINES J200410EL - 10



OCEAN RIDGE J200411EL - 13



ROYAL CANBERRA J200415EL - 10



TUCKERS POINT J200432EL - 04



ROCKERY J200432EL - 09



GRAYHAWK J200432EL - 11



ESCENA LIGHT WALNUT J5119 - 6



EMERALD BAY J5145 - 6

Matching Wood & Laminate Profiles

For a seamless, refined finish, we offer an extensive range of expertly crafted mouldings to complement our wooden and laminate floors. Your fitter can provide guidance on selecting the most suitable profiles for a flawless installation.



SCOTIA
19 X 19MM
ASC



15MM REDUCER
21 X 56MM
ARED



15MM BORDER PROFILE
21 X 36MM
AL



15MM T-PROFILE
21 X 56MM
AT



15MM WOOD-CARPET REDUCER
22 X 39MM
ACPTRED



20MM REDUCER
26 X 56MM
ARED



15MM UNIVERSAL STAIR NOSING
54 X 38MM
AST-U



20MM UNIVERSAL STAIR NOSING
54 X 38MM
AST-20MM



STAIR NOSING MULTI PURPOSE
7 X 28 X 50MM
ASTMULTI



SCOTIA
19 X 19 X 2400MM

FQFC



BORDER PROFILE
9 X 32 X 3000MM

PBP



STAIR PROFILE
9 X 50 X 1000MM

PSTAIR



T-PROFILE
9 X 45 X 1000MM
9 X 45 X 3000MM

PTP



REDUCER
9 X 45 X 1000MM
9 X 45 X 3000MM

PRP



WOOD PIPE COVERS

LOW LINE 15MM UNP
OAK, WALNUT, SMOKED, WHITE, GREY, DARK GREY

Underlay for Wood, Laminate & Vinyl Flooring

Our high-performance underlays are crafted to create the ideal foundation for every flooring type wood, laminate, or vinyl. Designed to enhance comfort, stability, and longevity, they ensure your floor performs at its best. Your fitter will advise on the most suitable option for your installation.



XYLOTHERM

Specifically engineered for use with underfloor heating systems, Xylotherm delivers optimal thermal conductivity while maintaining superior support. (Please refer to the manufacturer's underfloor heating system guidelines for full installation requirements.)

Suitable for wood, vinyl, and laminate flooring, this advanced underlay features a self-seal lip that forms an effective Moisture Barrier (DPM). Its refined cell-foam structure enhances acoustic performance, offering excellent impact sound reduction at 19dB.

IIXPE30L - 3MM THICKNESS



XYLOLVT

Purpose-designed for vinyl flooring, XYLOLVT is crafted from high-density EVA foam with a protective black PE film. When fully installed, it forms a continuous Moisture Barrier (DPM), while the Black Max Overlay provides exceptional grip, ensuring the vinyl remains securely in place without movement or creep.

Its advanced composition also delivers impressive acoustic performance, offering impact sound reduction of 23dB.

IPVC1510 - 1.5MM THICKNESS



XYLOMET

Our classic metallised-foam underlay, Xylomet provides a highly effective foiled Moisture Barrier (DPM) and delivers reliable acoustic enhancement, offering 17dB impact sound reduction. Its integrated self-seal lip ensures a secure, continuous barrier for added protection and performance.

11XPE30L - 3MM THICKNESS



TIMBERMATE EXCEL

Renowned for its outstanding acoustic performance, Timbermate Excel delivers an impressive 23dB impact sound reduction. This high-quality sponge rubber underlay is suitable for both concrete and timber subfloors and is fully compatible with underfloor heating systems.

When taped, it also provides an effective Moisture Barrier (DPM), ensuring a secure and durable installation.

ITATXLI4668 - 3.6MM

Care & Maintenance

Caring for your flooring is essential to preserving its natural beauty, performance, and longevity. With the right products and simple, regular maintenance, your floor will continue to look and feel exceptional for many years. We carefully select only the highest-quality care solutions to protect your investment, enhance durability, and maintain the refined finish of your chosen surface.

We highly recommend OSMO® products for the ongoing care and protection of our flooring. Developed from natural oils and waxes, OSMO® finishes deliver exceptional durability while enhancing the natural beauty of wood. When used from installation onwards, they help preserve long-term strength, colour, and surface integrity.

MAINTENANCE KIT FOR NEWLY LAID FLOORS

A complete care system designed for the ongoing

maintenance of new floors.

The kit includes:

- OSMO® Wash & Care for regular, gentle cleaning
- OSMO® Liquid Wax Cleaner for occasional intensive cleaning and surface refreshing
- Maintenance cloths and full instructions

This kit provides everything required to keep your floor looking its best from day one.

MULTI PACK FELT PADS

High-density felt pads designed to protect flooring from scratches and dents caused by furniture movement. Ideal for use under chairs, tables, and heavier items to prevent marking and prolong the life of your floor.



WOOD FLOOR POLISH - SATIN OR MATT

A premium polish formulated to rejuvenate and refresh finished wood flooring. Available in satin or matt, it helps maintain sheen, improve resistance to wear, and extend the life of the protective surface.

PRODUCT CODE: 1IXPE30L

TIMBERMATE EXCEL

A leading acoustic installation underlay delivering exceptional 23dB sound reduction. Manufactured from high-quality sponge rubber, it is suitable for both concrete and timber subfloors and fully compatible with underfloor heating systems. When taped, it also provides an excellent Moisture Barrier (DPM).

PRODUCT CODE: ITATXLI4668
3.6MM THICKNESS



Flooring Selection Considerations

Before choosing your Xylo Floor, it is essential to ensure that your subfloor and room environment are correctly prepared. Proper preparation will significantly improve the performance, stability, and longevity of your floor.

IS YOUR SUBFLOOR SUFFICIENTLY FLAT?

Your subfloor should not vary more than $\pm 4\text{mm}$ over a 2-metre span. This can be checked using a 2-metre straight edge.

An uneven subfloor may cause the flooring to feel “sprung,” which will impair long-term performance.

IS YOUR SUBFLOOR SUFFICIENTLY DRY?

If installing over concrete, you must use a Moisture Resistant underlay or DPM (damp proof membrane).

Additionally, the screed moisture level must fall within acceptable limits. Xylo Flooring strongly recommends that installations over screed are carried out only by a qualified installer.

ACCLIMATISATION PERIOD?

All engineered and multi-layer hardwood floors require time to acclimatise before installation.

- Leave flooring flat and unopened in the room where it will be fitted
- Minimum acclimatisation period: 48 hours

This allows the boards to adjust to local humidity and temperature.

1 STRIP PLANK

“1 Strip” describes a floorboard that has a single solid plank appearance. Xylo’s 1 Strip products are available in a range of widths, length and bevelled edge profiles

Bevel Options

- 2-sided bevel: Accentuates the length of the room
- 4-sided bevel: Shortens the perceived length but makes the width appear larger

CHOOSING YOUR FINISH: LACQUERED OR OILED?

Lacquered Floors

Our UV-cured lacquered floors are available in satin or gloss finishes.

They are low-maintenance and easy to keep clean:

- Sweep with a soft broom
- Clean occasionally with a lightly moistened mop or soft damp cloth

Spills are easily wiped away due to the sealed surface.

Note: Lacquered floors may show scratches over time.

To minimise marking, we recommend Dr. Schutz® Cleaner Protector. For deep scratches, a French polisher may be able to improve the surface. Further product details: www.dr-schutz.com

UV-Oiled Floors

UV-oiled floors have a soft matt finish that enhances the wood’s natural grain while providing excellent durability. The UV-curing process creates a resilient surface that protects the timber without compromising its natural look and feel.

Care is simple:

- Sweep regularly
 - Clean occasionally with a lightly damp cloth or mop
- Scratches on oiled floors are often less noticeable, and minor repairs can typically be addressed without refinishing the entire floor. A reapplication of oil will restore and refresh the appearance.

For added protection - especially in high-footfall areas - Xylo recommends applying OSMO® Polyx Hard Wax Oil to our pre-finished floors. Xylo Flooring advises that both oiling and re-oiling be carried out by a qualified installer.

Further product details: www.osmouk.com

SAMPLING

Wood is a natural material, and no two boards will ever be identical. Variations in colour, grain, and texture are inherent characteristics of real wood and should be embraced as part of its natural beauty.

Images within this brochure should therefore be regarded as a general guide, not an exact representation of the final product.

To help you make an informed choice, A4 samples are available for viewing in your home or business and can be ordered at: www.xyloflooring.com

Please Note:

- As a natural product, hardwood floors will scratch and indent with use.
- All timber species will change colour over time when exposed to UV light.
- Timber floors may expand and contract in response to local temperature and humidity changes.

A professional fitter will be able to offer project-specific advice and guidance.

Once your floor has been delivered, **YOU MUST APPROVE IT BEFORE INSTALLATION BEGINS.**

STONE PLASTIC COMPOSITE FLOORING (SPC)

Our SPC range features premium 6mm vinyl planks designed for durability, realism, and convenience.

Key features:

- Suitable for most water-based underfloor heating systems (not electric)
- Deep grain texture or “matt oiled” appearance
- Valinge® 5G Click System for fast, simple fitting
- Heavyweight 6mm construction for enhanced stability
- Lifetime domestic warranty / 5-year commercial warranty
- Easy to clean - ideal for kitchens, bathrooms, and high-traffic areas
- SPC offers the look of real wood with outstanding practicality.

BATTERSEA LAMINATE FLOORING

Our Battersea 5G Click Laminate Collection is durable, economical, and designed to transform any interior with ease.

Features include:

- Matt-look finish in 12 classic wood designs
- Bevelled edge on all sides to emphasise individual boards
- Suitable for use with underfloor heating
- Warranty 25 year Residential / 10 year Medium Commercial
- Wear resistance AC4 – Class 32
- Simple to install and easy to maintain

A perfect balance of style, performance, and value.

WESTMINSTER, FITZROVIA HERRINGBONE

The Westminster Collection introduces a modern take on classic herringbone design in a robust SPC construction.

Highlights:

- Available in 12 timeless designs
- Heavyweight, rigid, and exceptionally durable
- Quick and straightforward installation
- Lifetime residential warranty / 15-year medium commercial warranty
- Hygienic, low-maintenance surface

An elegant, high-performance solution for both contemporary and traditional interiors.

LVT DRYBACK VINYL 3 mm

Glue-Down LVT Vinyl Flooring offers a durable, hygienic surface that's easy to clean and suitable for all areas of the home or workplace. Covered by a lifetime residential warranty.

CASTOR CHAIR USE

To protect your flooring, all Xylo products should be used in conjunction with a keyhole-style protective mat when castor chairs are present. This helps prevent surface scratching and indentation.

Installing Xylo Flooring Over Underfloor Heating

Xylo engineered hardwood flooring is generally suitable for use with waterborne underfloor heating systems. However, specific precautions must be taken to ensure the flooring performs reliably and maintains long-term stability.

PRE-INSTALLATION REQUIREMENTS

At the time of installation, the screed moisture content needs to be below 2.0% MC, and the ambient relative humidity needs to be below 70% RH. Inadequate screed drying may cause issues such as surface discolouration or a cloudy/opaque finish, distortion/buckling/excessive expansion.

- The underfloor heating system must be fully operational at least two weeks prior to installation to allow the subfloor to dry and stabilise.
- The system should be switched off 2–3 days before the flooring is laid.
- At the time of installation, the screed moisture content needs to be below 2.0% MC, or alternatively the ambient relative humidity needs to be below 70% RH.
- Inadequate screed drying may cause issues such as surface discolouration or a cloudy/opaque finish on lacquered boards.

HEATING SYSTEM CONFIGURATION

Avoid excessively humid or dry conditions, as these can create internal stress within the boards and affect dimensional stability.

- The heating system must distribute heat evenly across the subfloor. Localised “hot spots” can damage the flooring and impair performance.
- The maximum surface temperature recommended for Xylo Flooring is 25°C, allowing for the thermal sensitivity of certain wood species.
- The underfloor heating must remain off for 48 hours after installation.
- Avoid excessively dry conditions, as these can create internal stress within the boards and affect dimensional stability.



ENVIRONMENTAL CONDITIONS

- The recommended indoor climate for engineered hardwood flooring is 45% – 65% relative humidity (RH).
- RH can be monitored with an inexpensive hygrometer.
- During summer, RH levels of around 70% are generally acceptable.
- Winter poses a greater risk, as RH levels may fall as low as 30%, creating an overly dry environment potentially causing excessive contraction of the boards. Static shocks are a common indicator that indoor RH is too low.
- To maintain healthy humidity levels through winter, consider using a humidifier; even pot plants can help contribute moisture to the air.

OPERATION OF THE HEATING SYSTEM

- Temperature adjustments must be made gradually to avoid thermal shock.
- Do not switch the heating on suddenly.

- Increase or decrease temperature at a rate of no more than 1°C per day.
- For best results, set the system to a low temperature early in the season, then bring it up steadily to a comfortable level.
- Maintain a consistent temperature throughout the winter rather than frequently turning the heating on and off.
- Ideal comfort - and optimum conditions for the flooring - typically falls between 16°C and 21°C.

INSTALLATION APPROACH

- Professional opinions vary on the best installation method over underfloor heating.
- In larger areas, fixing the flooring to the subfloor using a flexible adhesive can help:
- Reduce potential movement
- Improve dimensional stability
- This method may provide additional performance benefits depending on site conditions and installer preference.



Glossary

CLICK SYSTEMS

Valinge® 2G, 5G, 5Gi and UNICLIC® are patented installation systems that allow boards to be joined by simply pushing and clicking them into place. No glue is required.

DIRECTLY ADHERED FLOORS

Your fitter will be able to advise on the correct method for installing your chosen floor. When gluing directly to the subfloor, we recommend a high-quality, solvent-free adhesive such as Sikabond® 15L. This elastic adhesive is also suitable for use over underfloor heating systems.

Please note: 20mm multilayer wood floors may be nailed directly to the subfloor or to joists.

ENGINEERED BOARD

A 3-ply or multi-layer construction, engineered for strength, stability, and suitability for underfloor heating. Engineered floors offer excellent performance in a wide range of environments.

FLOATING FLOORS

A floating floor is not fixed directly to the subfloor. Instead, it is installed:

- Using a click system, where boards lock into place
- Or via a traditional T&G (Tongue & Groove) system, where joints are glued.

LIFETIME WARRANTY

All Xylo® flooring products are covered by our comprehensive Lifetime Residential Warranty. Please refer to product-specific documentation for full terms and conditions.

MULTI-LAYER BOARD

Constructed using multiple layers of high-quality plywood, this structure offers outstanding stability and strength. Multi-layer boards can be:

- Floated
- Glued
- Nailed to the subfloor
- Or, in the 20mm option, nailed directly to joists

SUBFLOOR

It is essential that the subfloor is perfectly flat before installation. A professional fitter will assess

and advise on any preparation required.

For screed or concrete subfloors, a DPM (Damp Proof Membrane) is required to protect the flooring.

T&G (TONGUE & GROOVE)

A traditional installation system where boards are pushed together and the joints are glued. Xylo recommends a high-quality PVA D3 Adhesive, such as Sika® 502, a silicone - and solvent-free elastic adhesive.

TERMS OF FINISHING

Various finishing techniques are used to enhance the natural beauty of wood, including:

- Smoked
- Stained
- Brushed
- Distressed
- Handscraped
- UV Finished

Many Xylo floors are suitable for use with underfloor heating. If in doubt, please consult your underfloor heating supplier for compatibility.



WOOD GRADES

Xylo Flooring operates a strict Due Diligence Policy to minimise the risk of placing illegally harvested timber on the EU market.

Wood is a natural material and exhibits inherent variation in:

- Knots
- Grain slope
- Shakes
- Colour
- Mineral streaks and other natural features

We classify our wood using the following grading system:

AB Timber Grade

Our cleanest finish, ideal for those who prefer a more uniform appearance.

Characteristics:

- Minimal colour variation
- Very limited sapwood
- Sound knots under 3mm
- No stains, checks, or splits

ABC/ABCD Rustic Timber Grade

As the grading moves outward toward the perimeter of the tree trunk, the timber becomes more

varied and rustic.

Characteristics include:

- Natural colour variation
- Sound, filled knots over 3mm
- Minor checks and splits that do not compromise structural integrity
- Mineral lines and sapwood
- Where indicated, AB boards may also be included to provide a blend of cleaner planks.

DE and ABCDE Country Timber Grade

A celebration of rich, natural character.

Characteristics:

- Significant colour variation
- Large knots and knot holes
- Checks and splits (filled where required)
- Pronounced mineral lines and natural imperfections

These traits enhance the individuality of each plank and are fully allowed within this grade.

SPC VINYL (VALINGE® 5G SYSTEM)

Our SPC floors are produced using the respected Valinge® 5G Click System. SPC (Stone Plastic

Composite) is more stable than traditional LVT because:

- LVT contains approx. 70% PVC powder, which is more heat-sensitive
- SPC contains approx. 30% PVC, making it far less prone to temperature-related movement

XYLO FLOORING AND OUR COMMITMENT TO THE ENVIRONMENT

Given the significant volumes of timber used in flooring production, Xylo Flooring recognises its responsibility to ensure sustainable sourcing.

We are proud to hold FSC® Certification, enabling us to supply Forest Stewardship Council® certified products for specified projects.

By working closely with our partner factories, we ensure all products are manufactured using responsibly sourced materials.

Where specified, FSC® Certified products can be supplied for larger commercial projects. Please contact our sales office for further information.

Xylo House Suite 304
Business Design Centre
52 Upper Street
Islington
London N1 0QH



+44(0)20 8368 8122
info@xyloflooring.com
xyloflooring.com

Instagram Facebook Twitter @xyloflooring